

**COLOR**

**PENCILS**

# **IN THIS LESSON YOU WILL...**

- **Identify characteristics of colored pencils.**
- **Watch “How Its Made: Colored Pencils”**
- **Practice colored pencil techniques of scumbling, directional marks, and broad shading.**
- **Practice layering, saturating, and burnishing colored pencils to shade in a sphere making the sphere look 3-D.**

# HOW COLOR PENCILS ARE MADE

[Watch "How Its Made Video"](#)

# COLORED PENCIL FACTS

- Pigment concentration is what gives the pencil its quality.
- Many chemicals are used to make the binder.
- Minerals make up the pigment.
- No lead in colored pencils.

# COLOR PENCIL TECHNIQUES

Scumbling



Directional Marks

Shading

# COLOR PENCIL TECHNIQUES

Scumbling



Directional Marks



Shading

# COLOR PENCIL TECHNIQUES

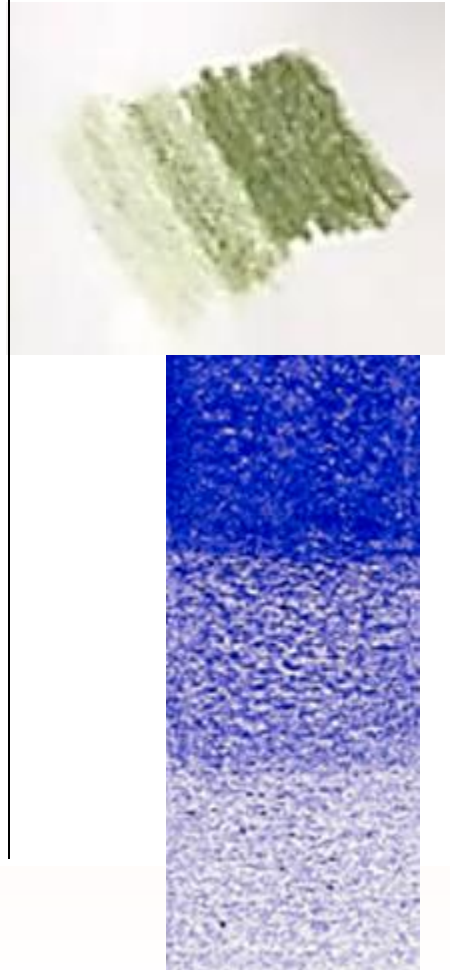
Scumbling



Directional Marks



Shading



# Color Pencil Worksheet

Using a  
Yellow  
Pencil,  
lightly fill in  
the circle.





Using a Orange pencil start to create the shape by varying the pressure used in covering the first layer of yellow. Leaving an area of lights to work with later



Next layer a covering of Red-Orange, again varying the pressure and width of the covering. Always layer from the outside of the circle toward the center.



Add and adjust the color layers as we go. We will be using Red and Brown. We will also be using the colors we have already used to adjust and intensify the illustration. As you can see each subsequent layer adds an illusion of depth to the work.



Now we will use the colorless blender to burnish the work. *Burnishing* means using harder pressure to blend the under layers together.

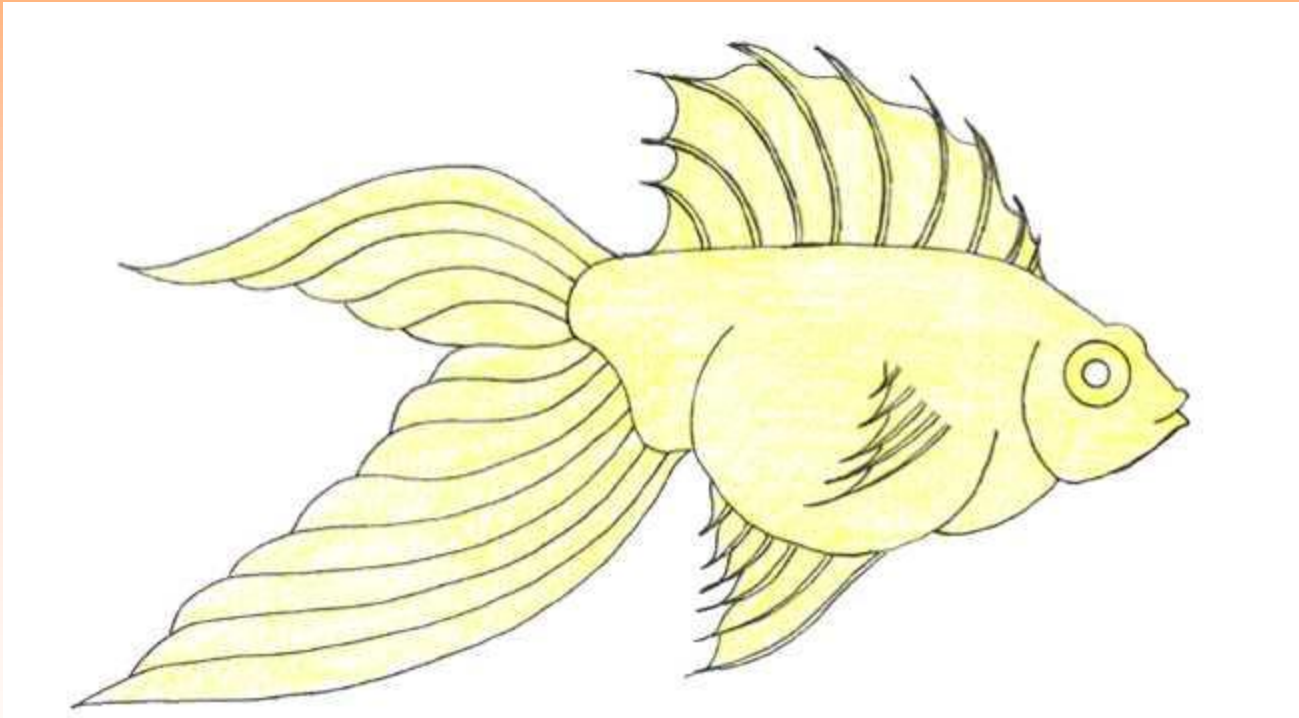


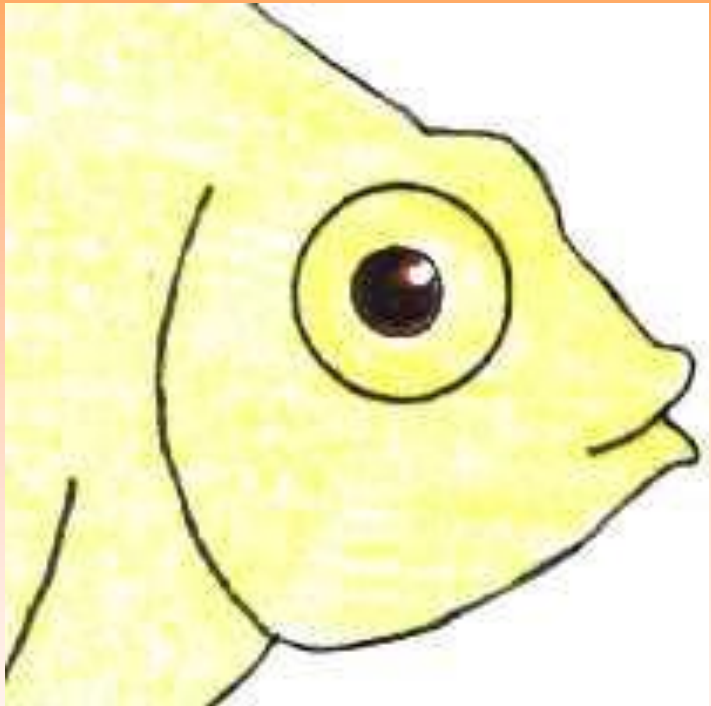


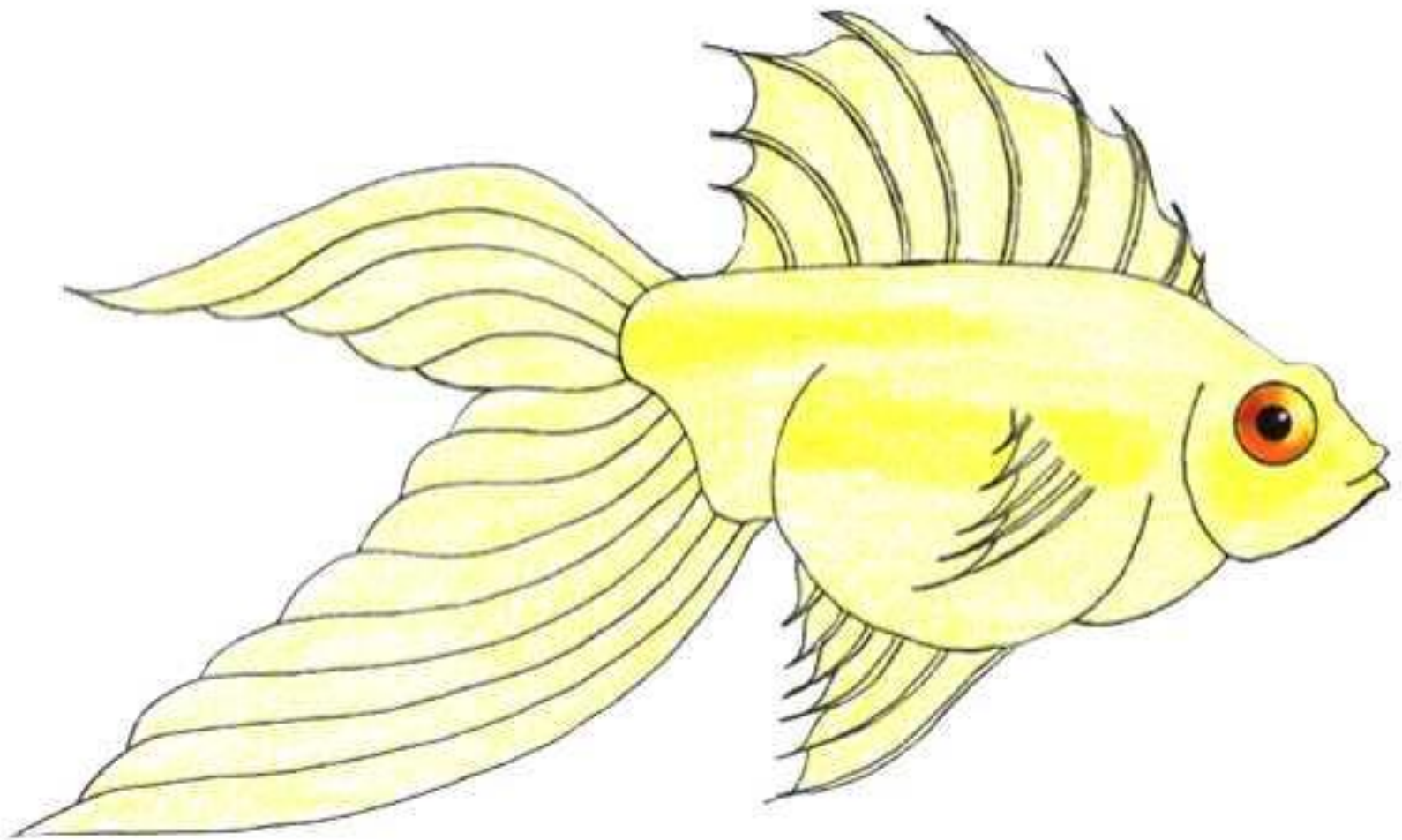
# **IN THIS LESSON YOU WILL...**

- **Practice layering, saturating, and burnishing colored pencils to shade in a fish making the fish look 3-D.**



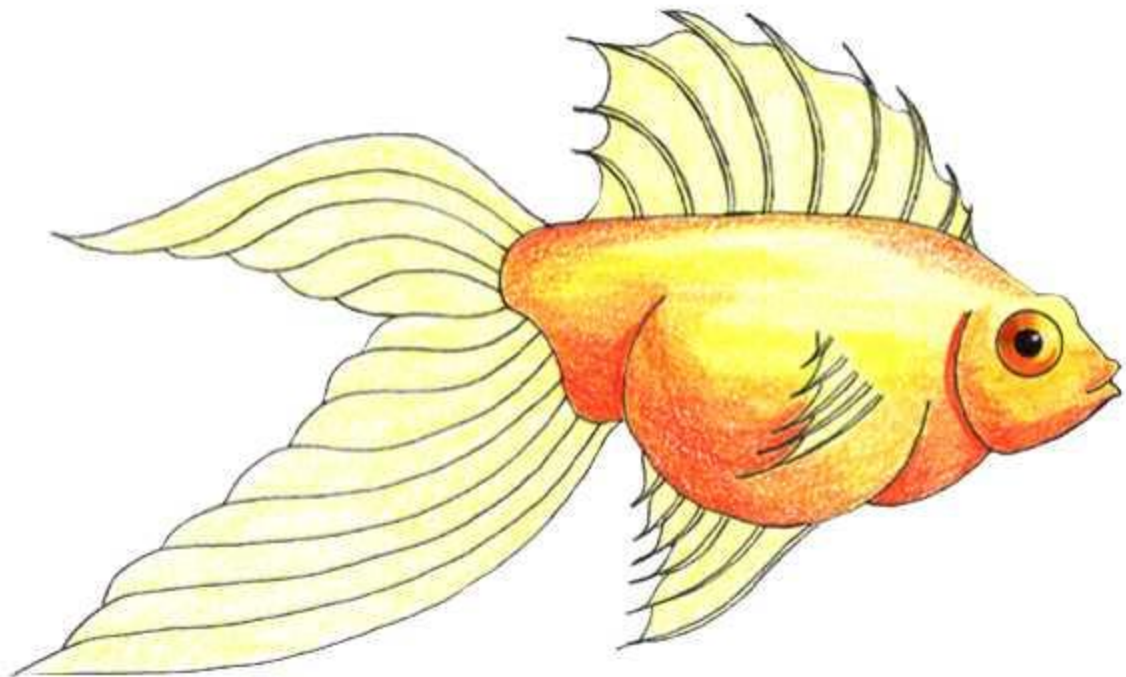


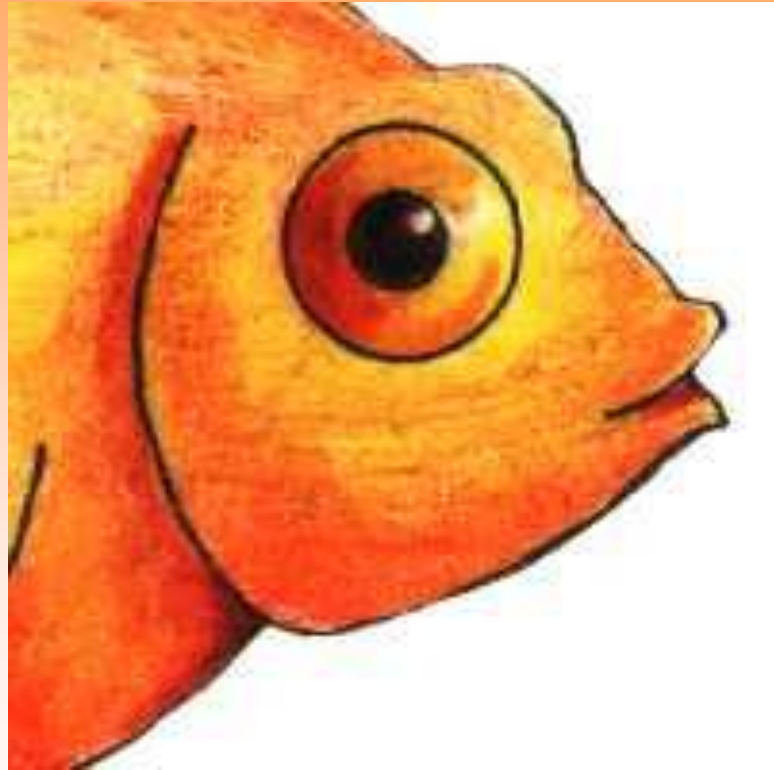
















Add the Peach here (just a hint)















# **IN THIS LESSON YOU WILL...**

- **Identify the design idea that “Less Is More.”**
- **Draw the layout on your 12” x 18” paper.**
- **Make a view finder.**
- **Begin drawing contours on final.**

**LESS**

**is**

**MORE**



# **You will draw a colorful object:**

- An industrial object, animal, plant, food, or insect (NO PEOPLE)
- You can work from a photo or an actual object.
- You will use the color photo emailed to Mrs. Haas at the beginning of the semester, or choose one from the center table.

# Examples

- Challenge yourself: Therefore, do not draw something that is one solid color



Good



Not so Good

# **GET THESE SUPPLIES:**

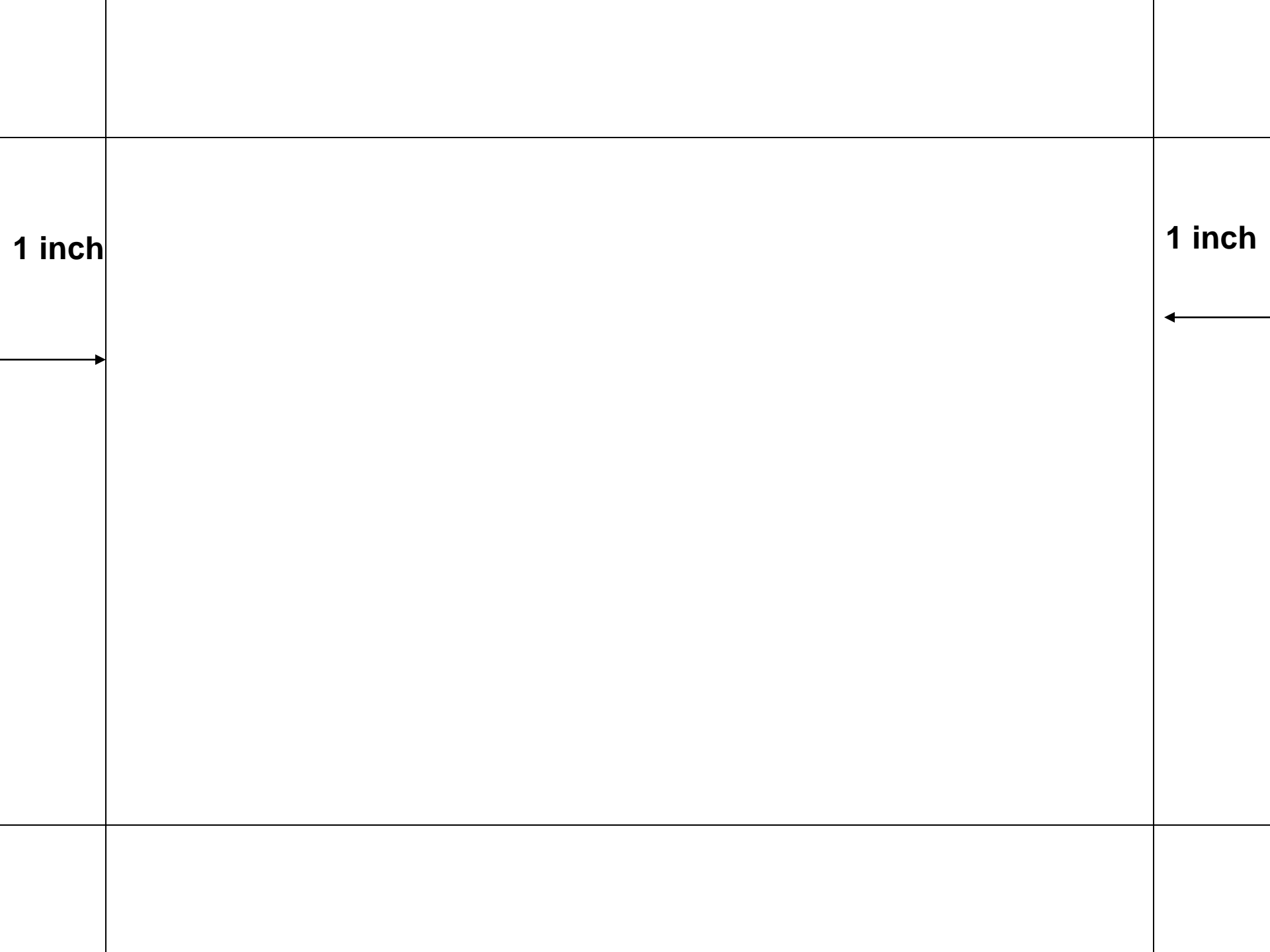
- 12" x 18" paper
- Piece of card stock
- Scissors
- Ruler
- 2H pencil

2 inches



2 inches





**1 inch**

**1 inch**

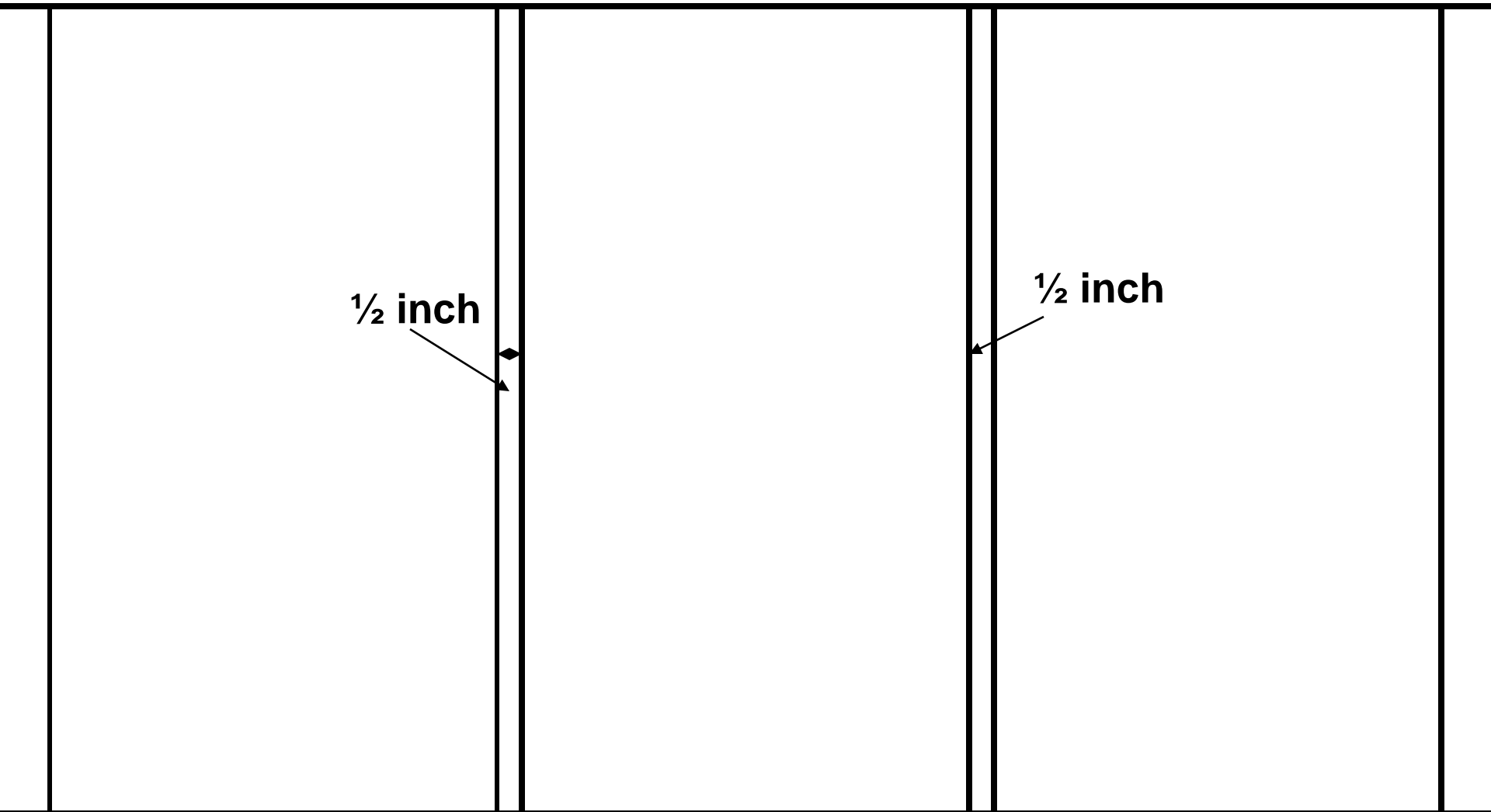




← **5 inches** →

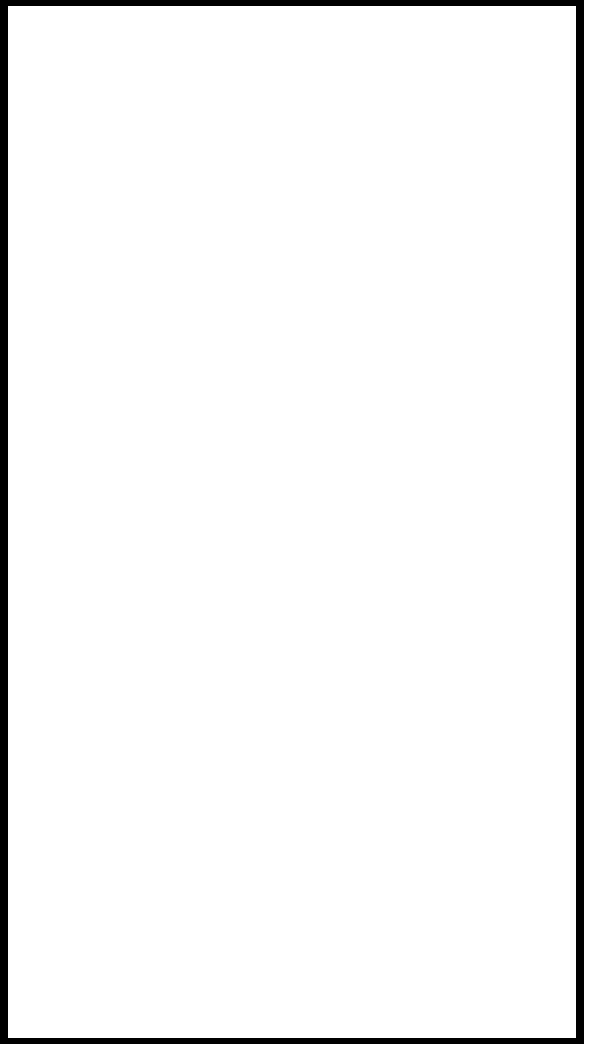
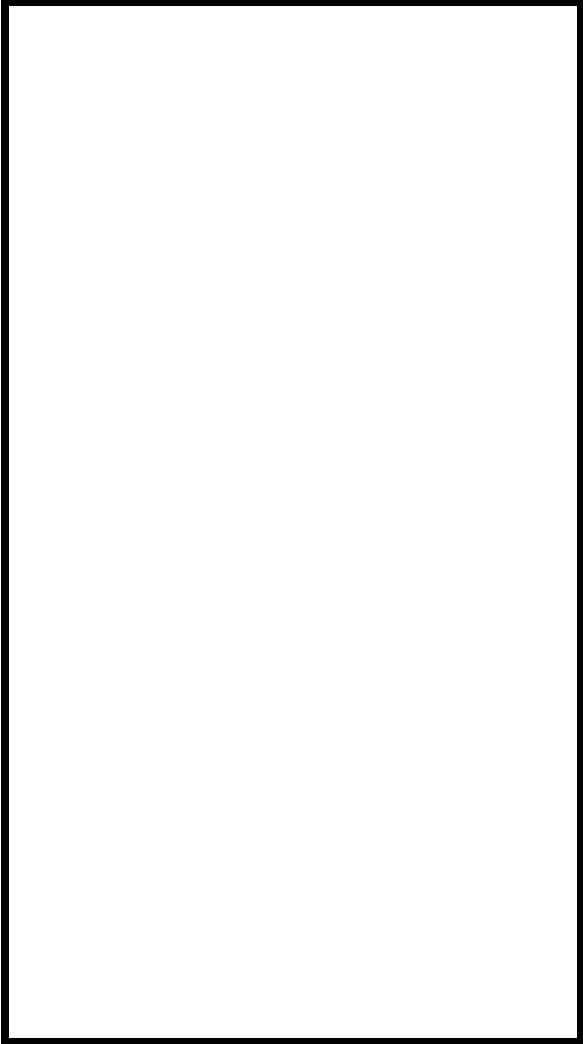
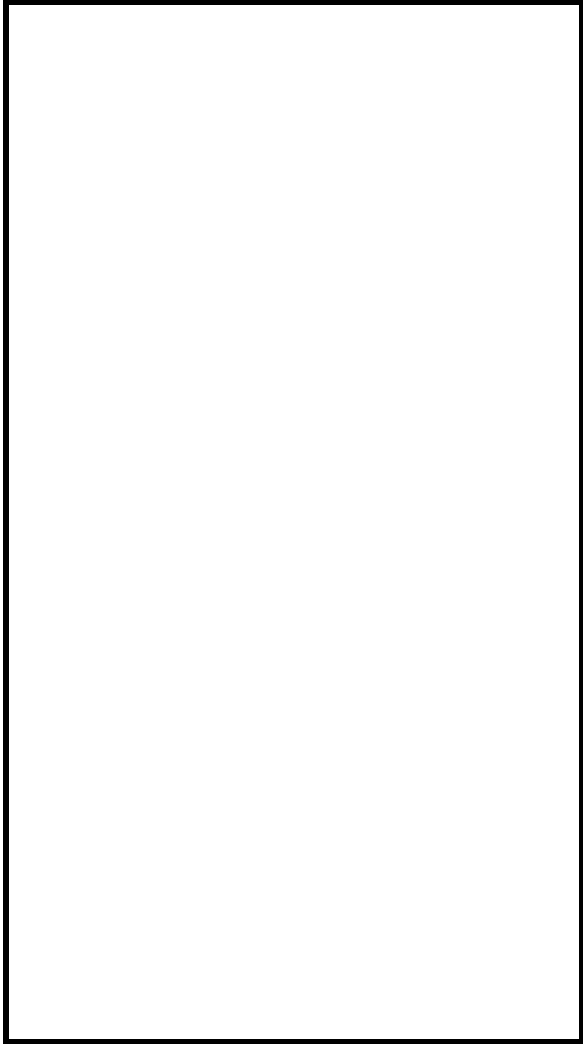
The image shows a grid with two rectangles. The left rectangle is outlined in black. Below its bottom edge, there is a horizontal double-headed arrow with the text "5 inches" in the center. The right rectangle is also outlined in black. Below its bottom edge, there is a horizontal double-headed arrow with the text "5 inches" in the center. The grid lines are thin and black, extending across the entire image.

← **5 inches** →



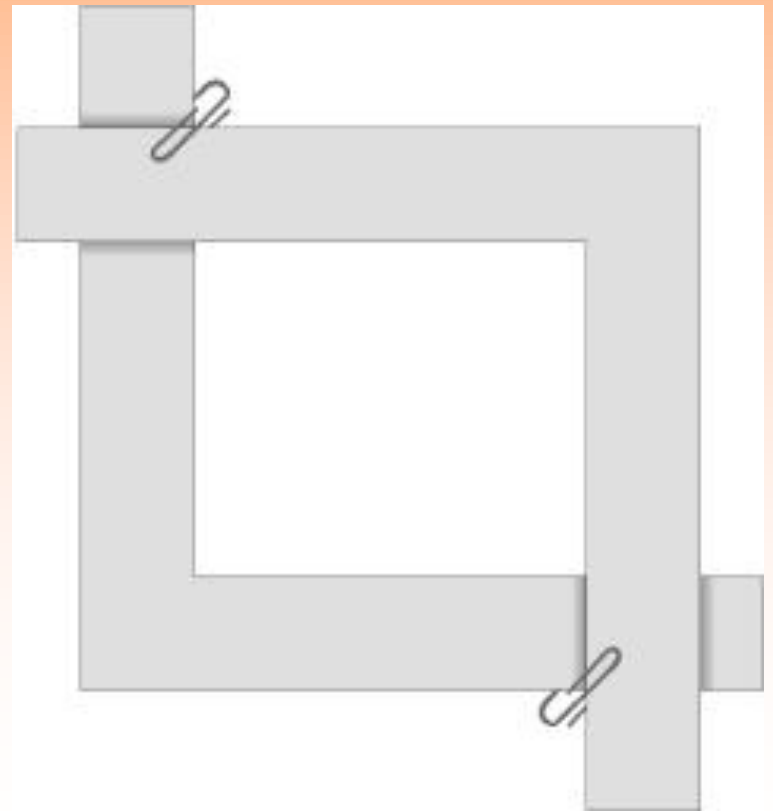
**1/2 inch**

**1/2 inch**



# How to make a viewfinder

1. Use your ruler to draw out a 1" thick L shape on the card stock.
2. Cut L shape out.
3. Use the remaining Card stock to draw a Second 1" L shape.
4. Cut L shape

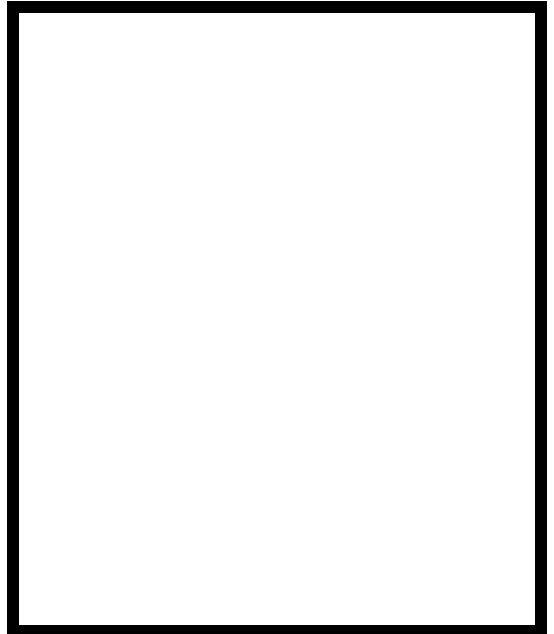
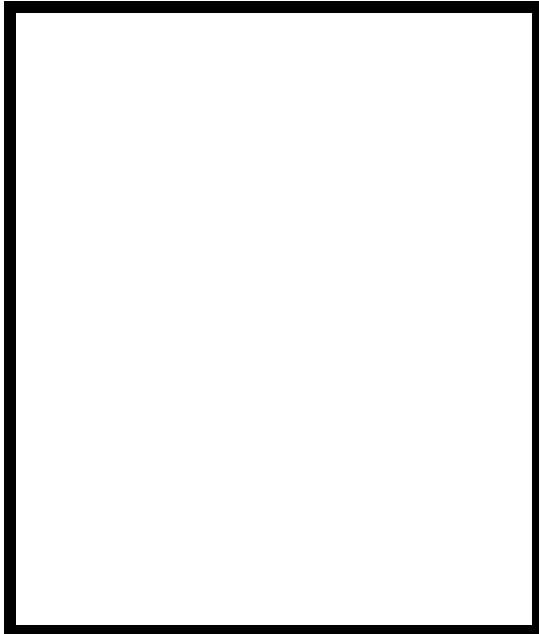
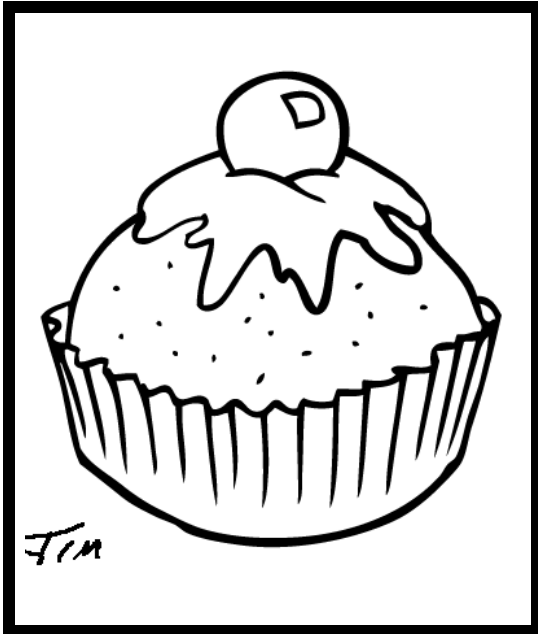


# YOU WILL USE YOUR VIEWFINDER TO CROP YOUR IMAGE



# BOX 1

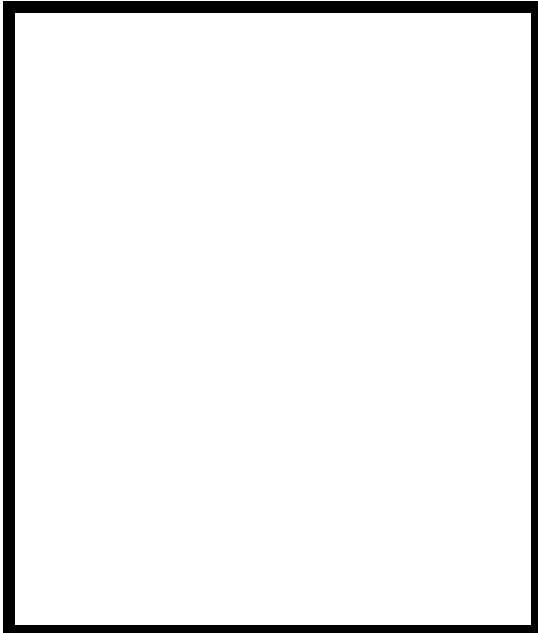
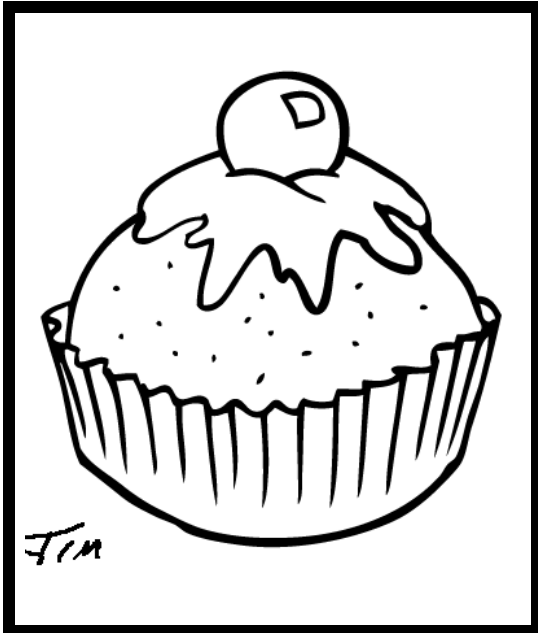
- **LIGHTLY Draw the whole object (you must draw lightly because your final drawing should show no sign of graphite pencil)**
- Your object must fill the whole box. Small drawings will not be accepted



# **BOX 2**

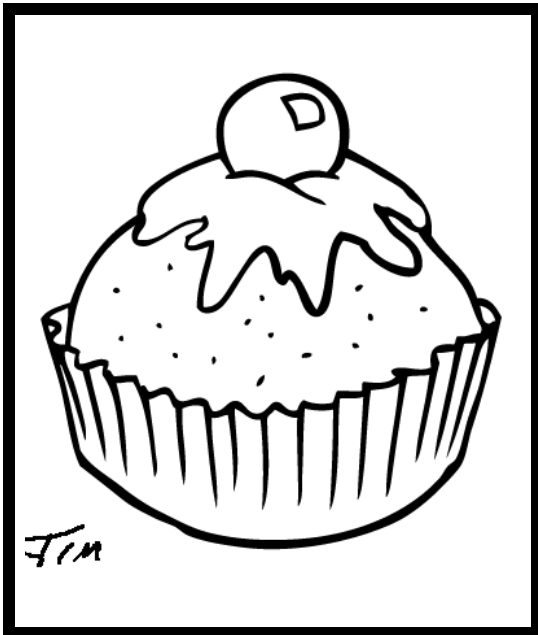
- **Drastically crop your object**
- **You must still have background space and the object must remain recognizable**
- **Using a view finder will help you crop your image.**



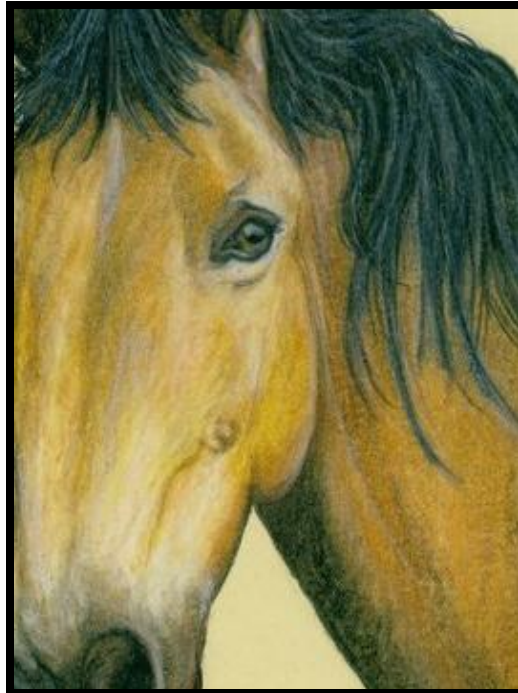
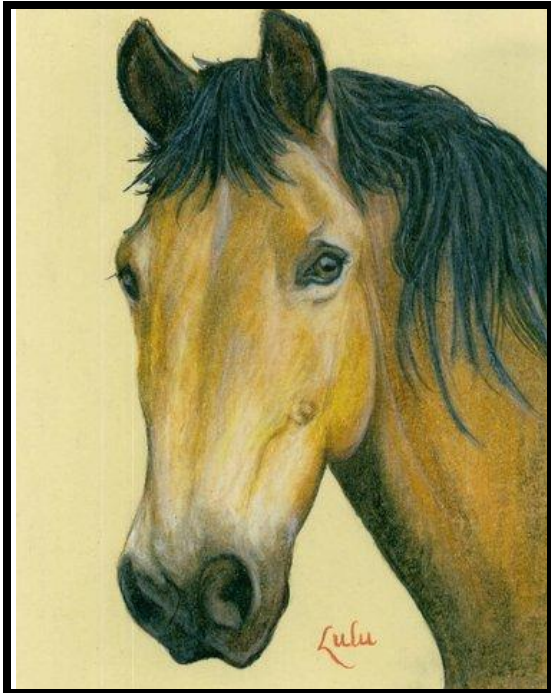


# **BOX 3**

- **You will ultimately get rid of all or almost all background space in this frame.**

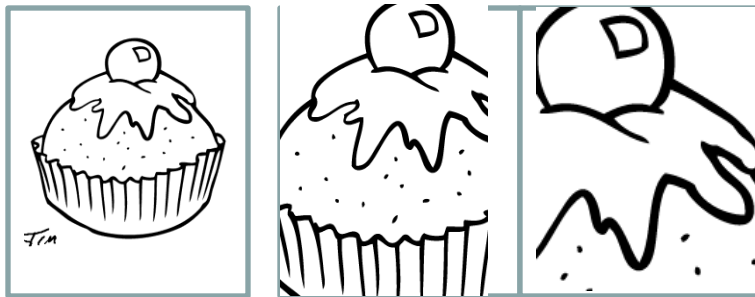






# Practice Sketches

## LESS IS MORE



- You must have your sketches approved before starting on final artwork.

If your object is in a horizontal format then turn your paper before you begin drawing



# IMPORTANT DATES

- Contour Line Check:
  - Thursday, November 1.
- Halfway check:
  - Tuesday, November 6.
- Project due:
  - Friday, November 9.



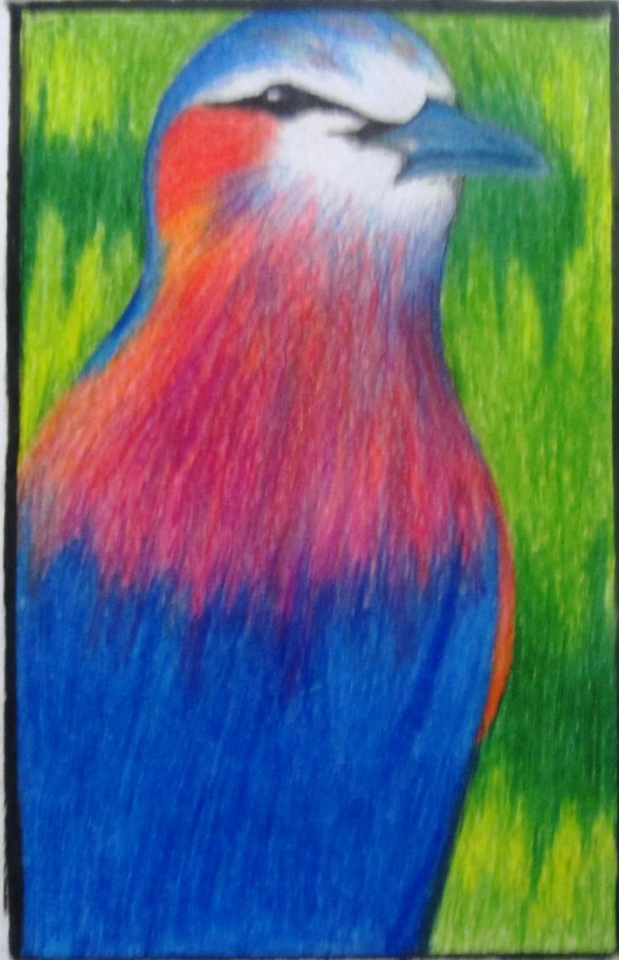
# REMEMBER:

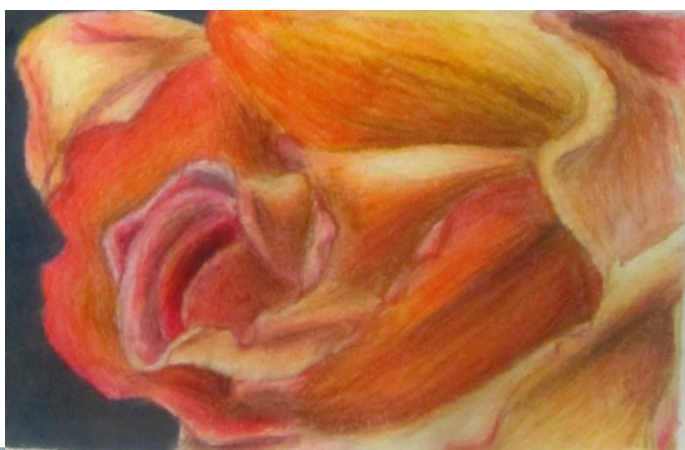
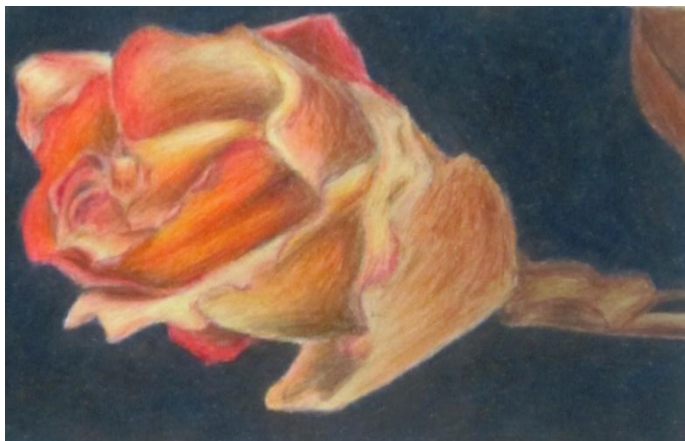
- **You will need to layer at least 3-4 colors on everything you shade in order to receive full credit!**
- **Always draw with sharp colored pencils..** If your colored pencils are dull, they will fall into the “valleys” of your paper.
- **Layer your colors.** Use a several colors and learn how to layer them. Begin with your lighter colors, and then gradually build up your drawing, applying darker ones as your continue.

# STUDENT EXAMPLES











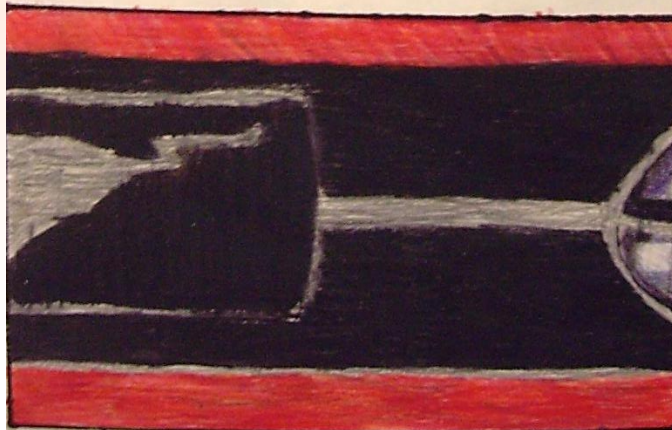
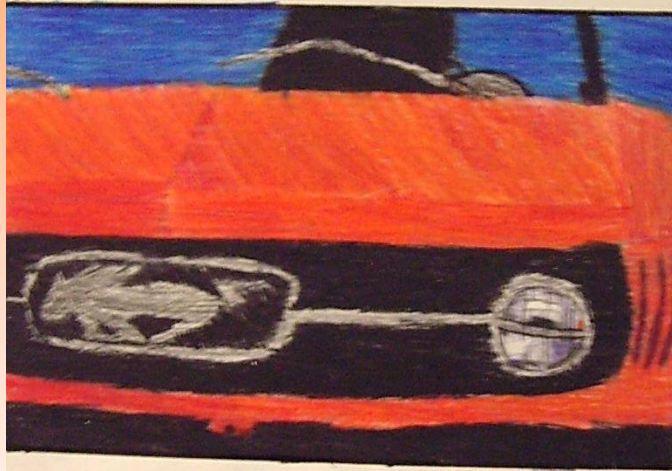
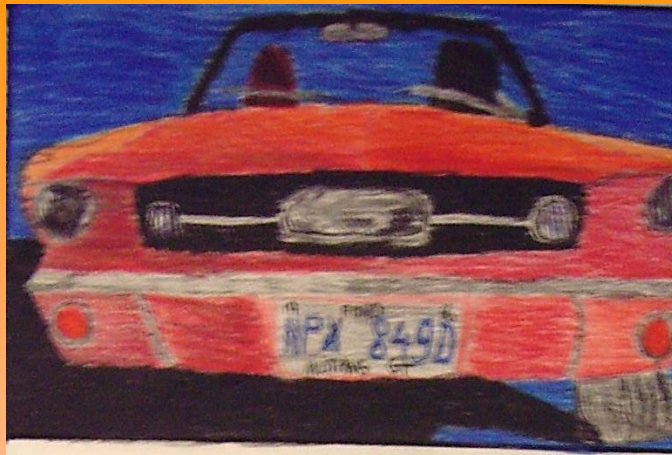




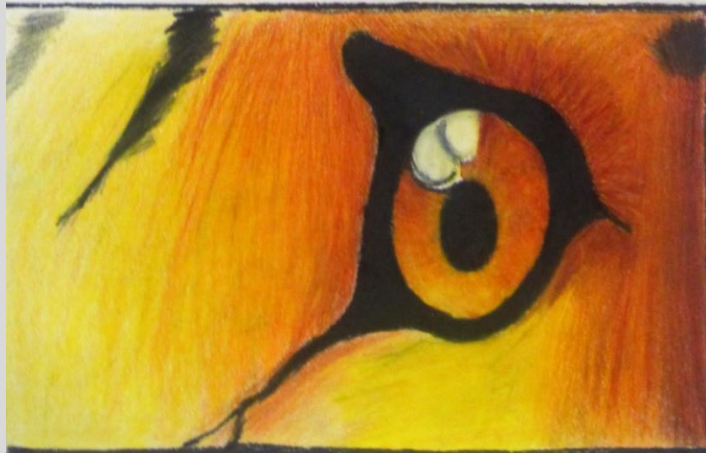
M.S.

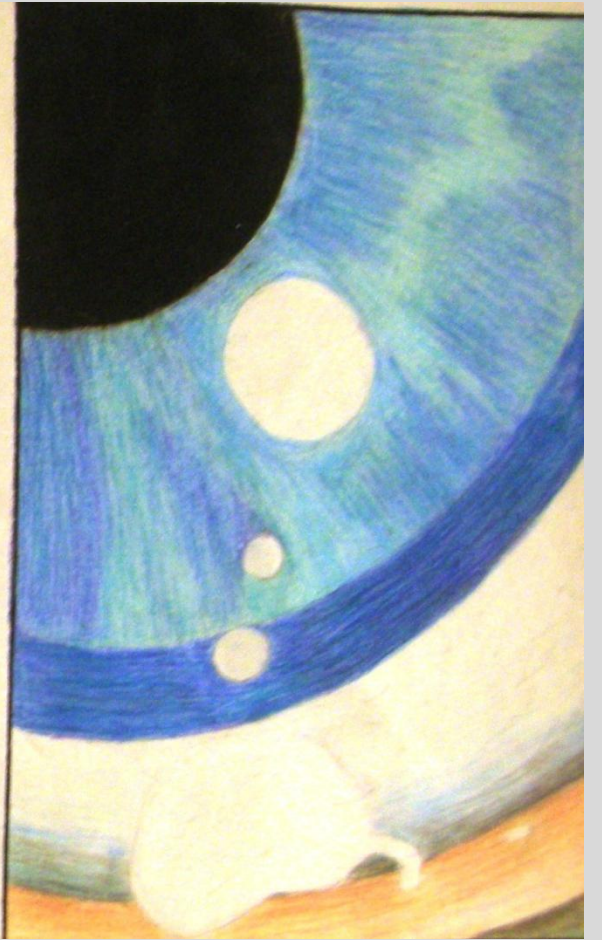
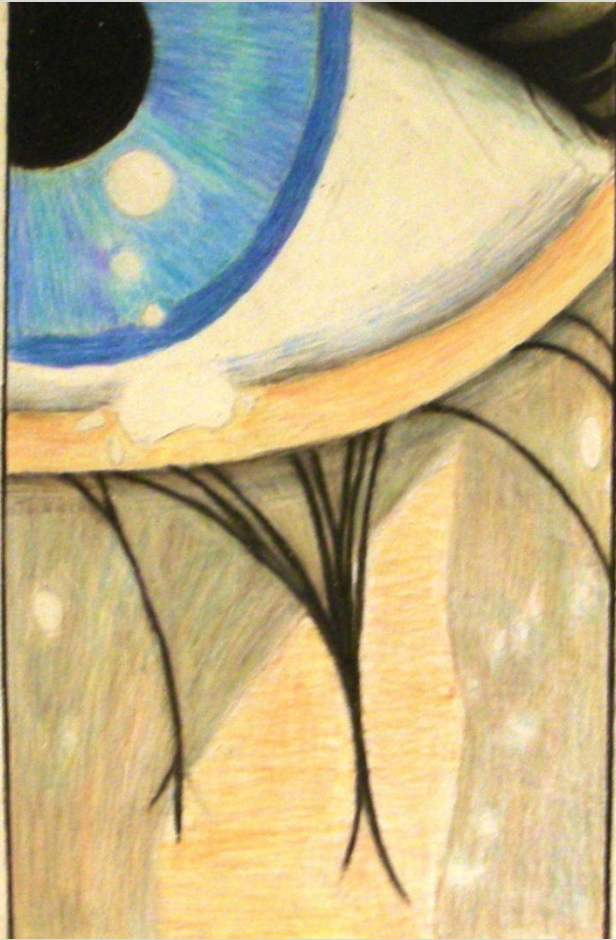




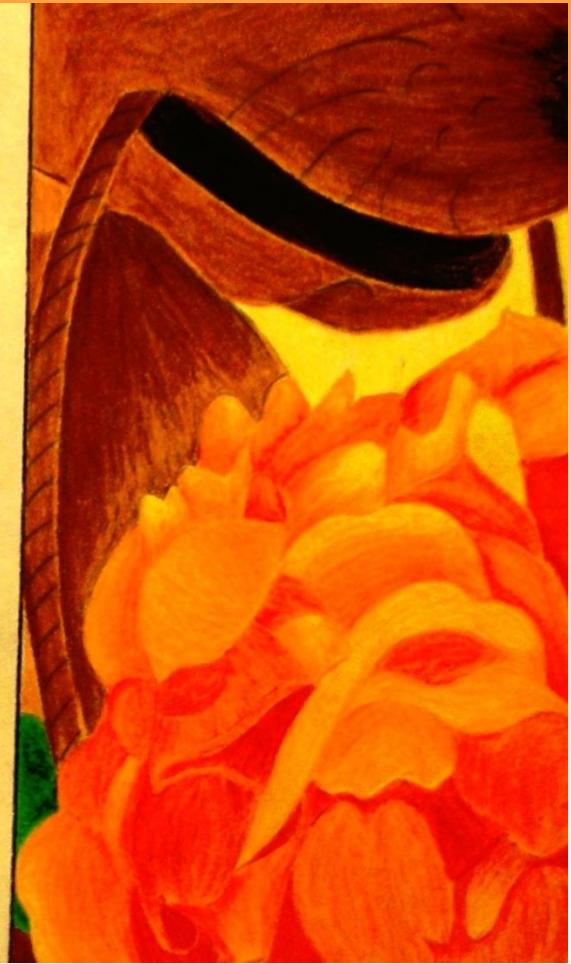
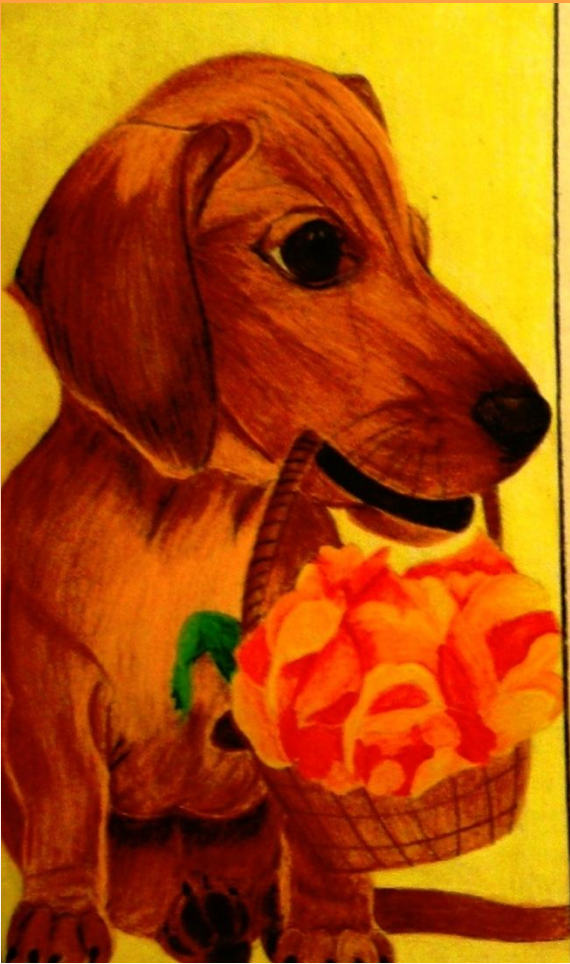


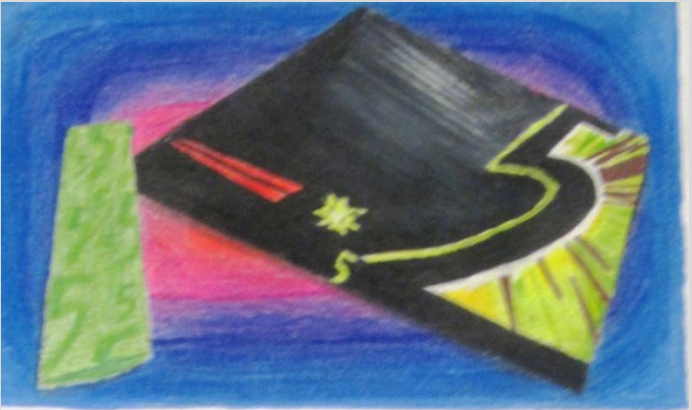










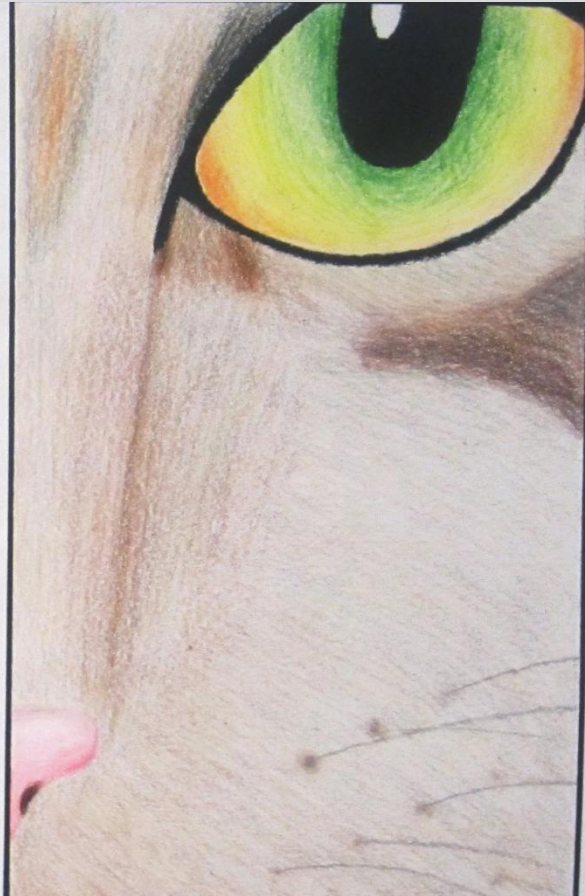
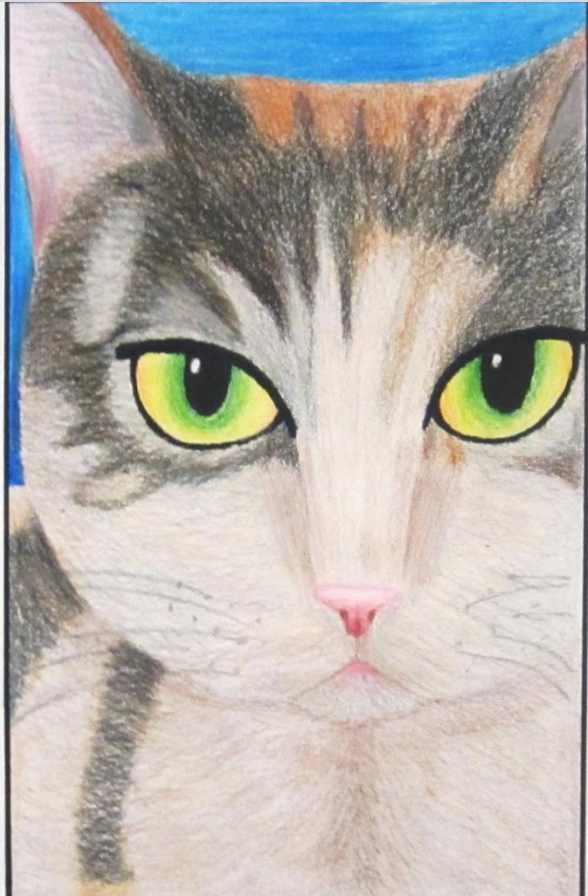
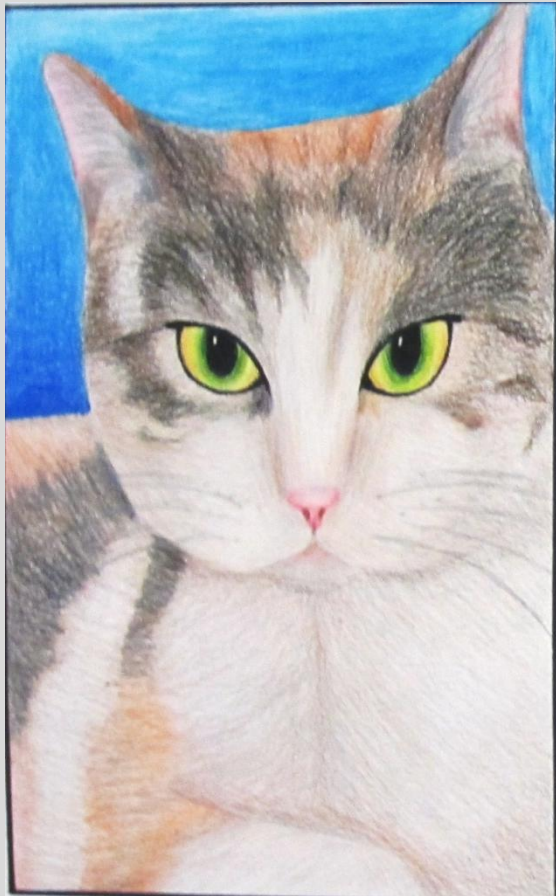


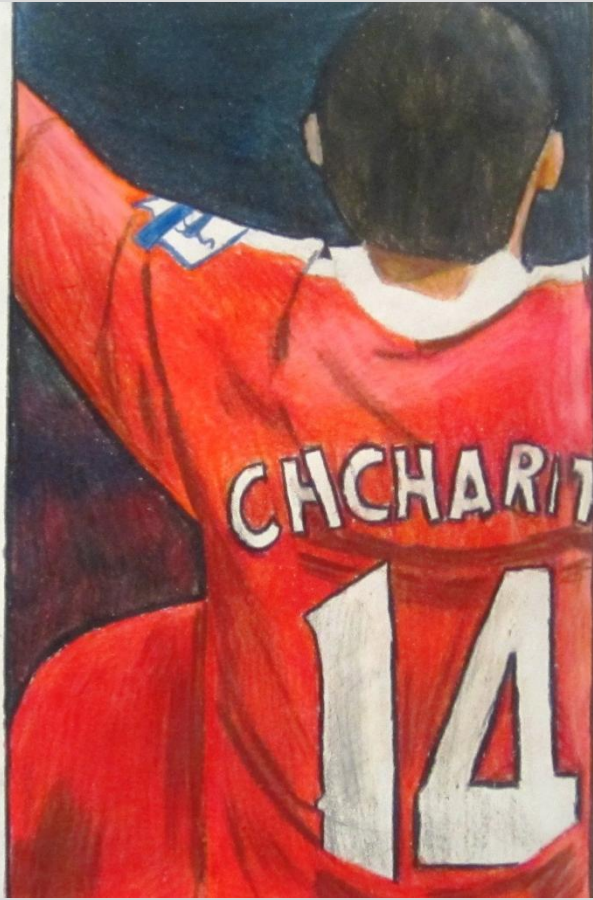
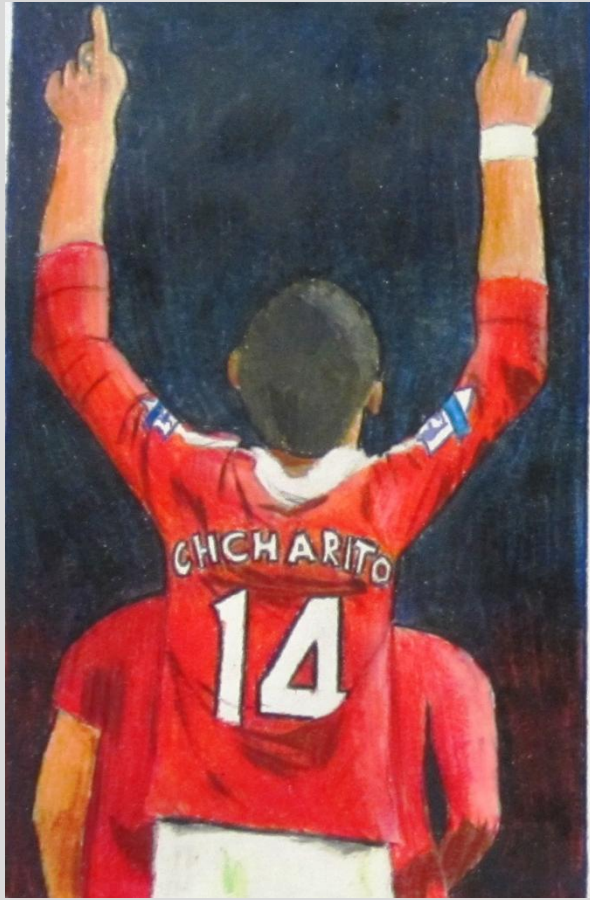


















# **LESS IS MORE GRADING CRITERIA**

- 1. Unique design idea.**
- 2. Applied Elements & Principles to create an interesting composition in each box.**
- 3. Color Pencil techniques – layering, saturation, line direction, burnishing.**
- 4. Zooming: How each zoomed image relates to each other.**
- 5. Technique: effort, neatness, no pencil lines, complete.**

# TOO MUCH CROPPING IN BOX 1





# WHAT COULD BE IMPROVED IN THIS DESIGN?

